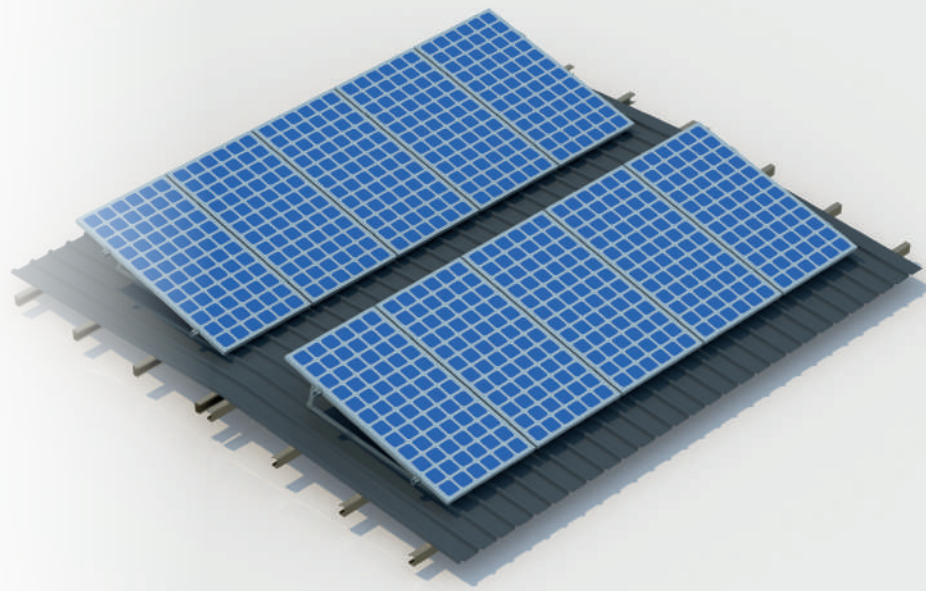




# PROINSO PV RACK TRIANGLE PRO



Robust aluminium structures  
designed and made in Europe



## PROINSO

**3GW**  
PROJECTS SUPPLIED

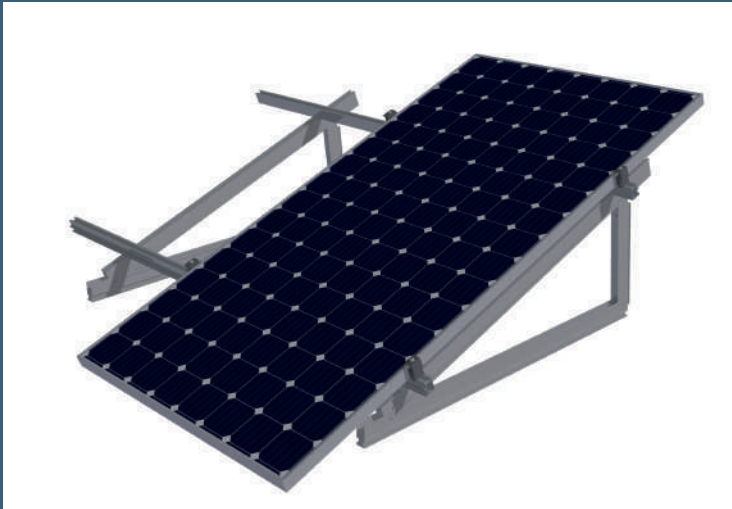
**10+ YEARS**  
EXPERIENCE IN SOLAR

**20+ OFFICES**  
ACROSS 5 CONTINENTS

**3 DIVISIONS**  
DISTRIBUTION & INTEGRATION,  
TECHNOLOGY,  
EPM

**2,500**  
QUALIFIED INSTALLERS

PROINSO PV Rack is one of the simplest rooftop structures to assemble on the PV market. It adds exceptional value to both commercial and residential projects by offering versatility and usability. Designed and manufactured in Europe and certified by TÜV, PROINSO PV Rack reduces the risk to the installer.



Our TRIANGLE PRO is designed to easily fit a multitude of different flat roof applications, due to its variable tilt angle and its several foot options for both ballasted solutions and roof penetration.



### EASY TO INSTALL

The TRIANGLE PRO was specifically developed to allow an easy project-specific adjustment for various special requirements on flat roofs. The system is inherently flexible and can be adapted to project specific requirements for optimal power production.



### COST EFFICIENT

The TRIANGLE PRO allows optimisation of components used through project customisation. Our engineers will calculate the required quantity of rails and fixing points based on your project specifications, enabling you to reduce the overall cost of system.



### ROBUST & DURABLE

All PROINSO PV Rack components are made from aluminium and stainless steel and certified by TÜV Rheinland. The high resistance to corrosion guarantees a maximum life span. Additionally, all structure parts can be recycled.



## TECHNICAL SPECIFICATIONS

<b>APPLICATION</b>	Flat roofs, ground or pitched roofs (check with designer)
<b>BUILDING HEIGHT</b>	Depends on wind loads on site
<b>PV-MODULES</b>	Framed, frameless
<b>MODULE LAYOUT</b>	Serial (up to approx. 12m per frame unit)
<b>MODULE ORIENTATION</b>	Portrait, Landscape
<b>PITCH</b>	10°-15°, 20°-30°, 35°-45° (other upon request)
<b>SIZE OF MODULE ARRAY</b>	Any size possible
<b>POSITION OF THE MODULE ARRAY</b>	No special requirements
<b>ROOF CLEARENCE</b>	80mm to 100mm (other upon request)
<b>STANDARDS</b>	Eurocode 0 – Basis of structural design Eurocode 1 – Action on structures Eurocode 9 – Design of aluminium structures
<b>SUPPORTING PROFILES</b>	Extruded aluminium profiles (EN AW 6063 T6)
<b>RAIL FIXATIONS</b>	Side fixing clip: Aluminium (EN AW 6063 T6)
<b>SMALL PARTS</b>	Stainless steel (V2A)
<b>COLOUR</b>	Aluminium: plate finish
<b>WARRANTY</b>	10 years



## EACH 1KW BOX CONTAINS THESE ELEMENTS



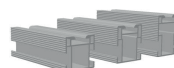
Triangle



End clamp



Mid clamp



Base rail



Connector



Roof or ballast connection

### PROINSO HQ

943 Yeovil Road  
SL1 4NH Slough  
UNITED KINGDOM  
info@proinso.net  
+44 (0)1753 538 448

### PROINSO SOUTH AFRICA

7th Floor, Mandela Rhodes Place,  
Cnr of Wale and Burg Street,  
Cape Town, 8000,  
South Africa  
southafrica@proinso.net  
+27 (0)21 410 8908

### PROINSO AMERICAS

1030 Riverside PKWY Suite 130  
West Sacramento  
CA 95605, United States  
promotions@proinso.net  
+1 (0)916 374 8722

### PROINSO EAST ASIA

15th Floor, 100 Queen's Road  
Center Central, Hong Kong  
china@proinso.net  
+852 (0)39 606 363

### PROINSO SOUTH ASIA

2-22 Evergreen Industrial  
Estate Shakti Mill Lane  
Mahalaxmi  
400011 Mumbai, India  
india@proinso.net  
+91 (0)22 4004 2286